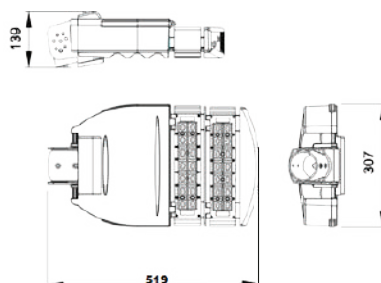
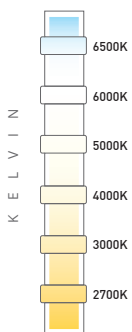
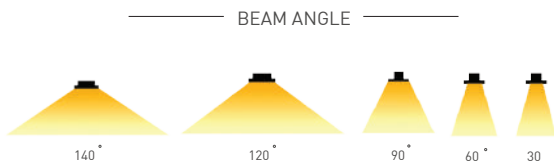




## FEATURES

- Housing: Die-cast aluminum powder coated.
  - Diffuser: Optical Lens
  - Light Source: BridgeLux USA
  - Life Span: 50,000 Hrs
  - Operating Temp: -20°C to 50°C
  - Options: Photocell, 0-10V dimming, DALI Dimming
- Manufactured in accordance with all International Standards**

Product Model	Total Power	Lumen	CCT	Dimension LxWxH
LM-002-STM6CW-25W	25W	3250 Lm	6000K	444x307x139mm
LM-002-STM6NW-25W	25W	3250 Lm	4000K	444x307x139mm
LM-002-STM6WW-25W	25W	3250 Lm	3000K	444x307x139mm
LM-002-STM6CW-30W	30W	3900 Lm	6000K	444x307x139mm
LM-002-STM6NW-30W	30W	3900 Lm	4000K	444x307x139mm
LM-002-STM6WW-30W	30W	3900 Lm	3000K	444x307x139mm
LM-002-STM6CW-60W	60W	7800 Lm	6000K	519x307x139mm
LM-002-STM6NW-60W	60W	7800 Lm	4000K	519x307x139mm
LM-002-STM6WW-60W	60W	7800 Lm	3000K	519x307x139mm

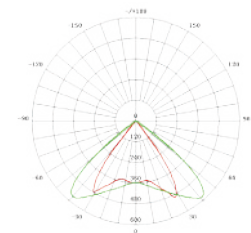


## Description

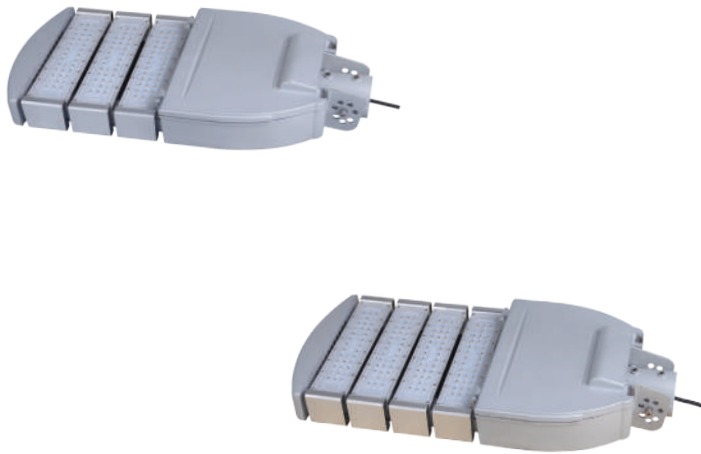
Lyte Master Emsix area light fixtures couples a sleek, reliable design with precise ANSI optical distributions to make them the ideal upgrade for area/site, roadway, and security applications. Perfect for new construction or easy replacement of existing installations. Emsix is made with premium grade aluminium die cast housing with vandal resistant polycarbonate lens with high quality Bridgelux LEDs. It has a standard beam angle of 30°, 60°, 90°, 120° and 140°.

## Area of Application

Street Light, Road Light & Area Lighting



IK10	DALI	1-10 DIMMING	PHASE DIMMING
IP66	LM-80	LED	SMD
CRI >90	RoHS	CE	Series Wiring
100-240V   50/60Hz			
LED DRIVERS	TRIDONIC	Lyte Master	LED CHIPS: BRIDGELUX, CREE



## FEATURES

- Housing: Die-cast aluminum powder coated.
- Diffuser: Optical Lens
- Light Source: BridgeLux USA
- Life Span: 50,000 Hrs
- Operating Temp: -20°C to 50°C
- Options: Photocell, 0-10V dimming, DALI Dimming

Manufactured in accordance with all International Standards

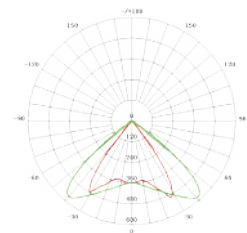
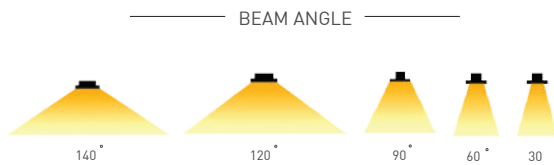
Product Model	Total Power	Lumen	CCT	Dimension LxWxH
LM-002-STM6CW-90W	90W	11700 Lm	6000K	594x307x139mm
LM-002-STM6NW-90W	90W	11700 Lm	4000K	594x307x139mm
LM-002-STM6WW-90W	90W	11700 Lm	3000K	594x307x139mm
LM-002-STM6CW-120W	120W	15600 Lm	6000K	669x307x139mm
LM-002-STM6NW-120W	120W	15600 Lm	4000K	669x307x139mm
LM-002-STM6WW-120W	120W	15600 Lm	3000K	669x307x139mm

## Description

Lyte Master Emsix area light fixtures couples a sleek, reliable design with precise ANSI optical distributions to make them the ideal upgrade for area/site, roadway, and security applications. Perfect for new construction or easy replacement of existing installations. Emsix is made with premium grade aluminium die cast housing with vandal resistant polycarbonate lens with high quality Bridgelux LEDs. It has a standard beam angle of 30°, 60°, 90°, 120° and 140°.

## Area of Application

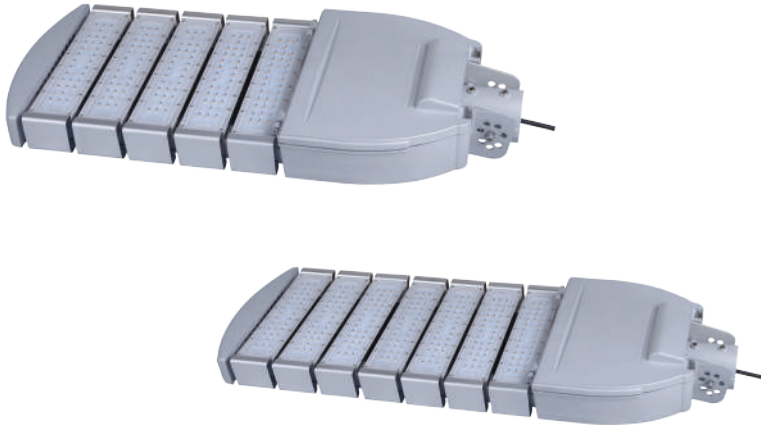
Street Light, Road Light & Area Lighting



K E L V I N

IK10			
IP66	DALI	1-10 DIMMING	PHASE DIMMING
LM-80	Energy Star	LED	SMD
CRI >90	RoHS	CE	Series Wiring
100-240V   50/60Hz			
LED DRIVERS:		TRIDONIC	

LED CHIPS: BRIDGELUX, CREE, LYTE MASTER



## FEATURES

- Housing: Die-cast aluminum powder coated.
  - Diffuser: Optical Lens
  - Light Source: BridgeLux USA
  - Life Span: 50,000 Hrs
  - Operating Temp: -20°C to 50°C
  - Options: Photocell, 0-10V dimming, DALI Dimming
- Manufactured in accordance with all International Standards**

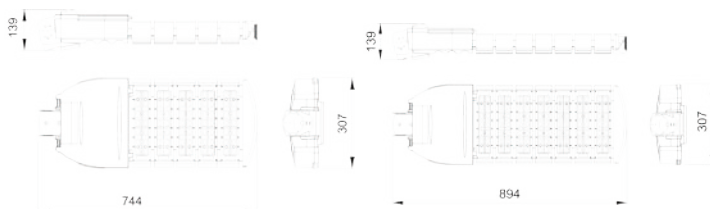
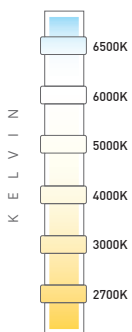
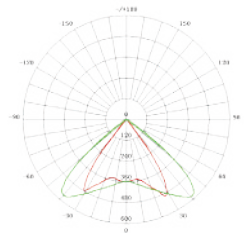
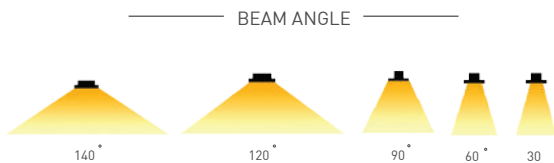
## Description

Lyte Master Emsix area light fixtures couples a sleek, reliable design with precise ANSI optical distributions to make them the ideal upgrade for area/site, roadway, and security applications. Perfect for new construction or easy replacement of existing installations. Emsix is made with premium grade aluminium die cast housing with vandal resistant polycarbonate lens with high quality Bridgelux LEDs. It has a standard beam angle of 30°, 60°, 90°, 120° and 140°.

Product Model	Total Power	Lumen	CCT	Dimension LxWxH
LM-002-STM6CW-160W	160W	20800 Lm	6000K	774x307x139mm
LM-002-STM6NW-160W	160W	20800 Lm	4000K	774x307x139mm
LM-002-STM6WW-160W	160W	20800 Lm	3000K	774x307x139mm
LM-002-STM6CW-200W	200W	26000 Lm	6000K	894x307x139mm
LM-002-STM6NW-200W	200W	26000 Lm	4000K	894x307x139mm
LM-002-STM6WW-200W	200W	26000 Lm	3000K	894x307x139mm

## Area of Application

Street Light, Road Light & Area Lighting



IK10	DALI		
IP66	1-10 DIMMING		PHASE DIMMING
LM-80	Energy Star	LED	SMD
CRI >90	RoHS	CE	Series Wiring
100-240V   50/60Hz			
LED DRIVERS	TRIDONIC	Lyte Master	LED CHIPS: BRIDGELUX, CREE



## FEATURES

- Housing: Die-cast aluminum powder coated.
- Diffuser: Optical Lens
- Light Source: Bridgelux USA
- Life Span: 50,000 Hrs
- Operating Temp: -20°C to 50°C
- Options: Photocell, 0-10V dimming, DALI Dimming

Manufactured in accordance with all International Standards

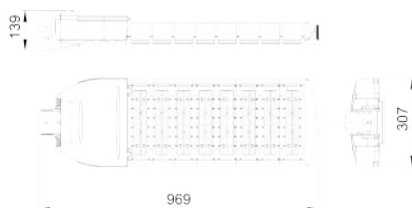
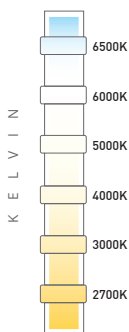
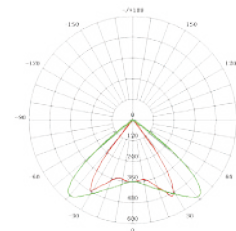
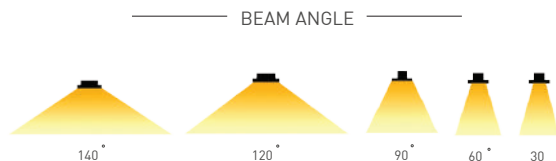
Product Model	Total Power	Lumen	CCT	Dimension LxWxH
LM-002-STM6CW-240W	240W	31200 Lm	6000K	969x307x139mm
LM-002-STM6NW-240W	240W	31200 Lm	4000K	969x307x139mm
LM-002-STM6WW-240W	240W	31200 Lm	3000K	969x307x139mm

## Description

Lyte Master Emsix area light fixtures couples a sleek, reliable design with precise ANSI optical distributions to make them the ideal upgrade for area/site, roadway, and security applications. Perfect for new construction or easy replacement of existing installations. Emsix is made with premium grade aluminium die cast housing with vandal resistant polycarbonate lens with high quality Bridgelux LEDs. It has a standard beam angle of 30°, 60°, 90°, 120° and 140°.

## Area of Application

Street Light, Road Light & Area Lighting



IK10			
IP66	DALI	1-10 DIMMING	PHASE DIMMING
LM-80	Bridgelux	LED	SMD
CRI >90	RoHS	CE	Series Wiring
100-240V   50/60Hz			
LED DRIVERS	TRIDONIC	Lyte Master	LED CHIPS: BRIDGELUX, CREE